



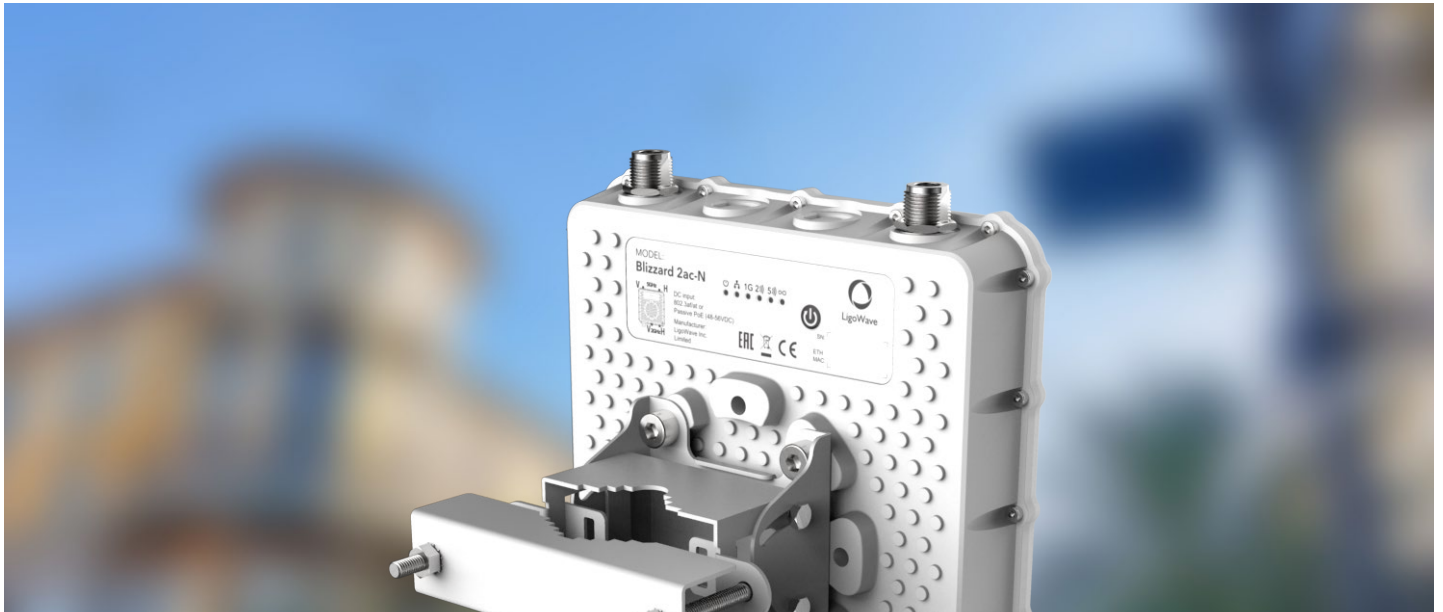
LigoWave



NFT Blizzard 2ac-N

A 2.4/5GHz Dual-Radio 802.11ac Outdoor Access Point

COPYRIGHT ©2018 LIGOWAVE



NFT Blizzard 2ac-N

The LigoWave NFT Blizzard 2ac-N is an outdoor Wi-Fi access point with integrated 2.4/5GHz 2x2 MIMO radios, boasting output power of 29dBm. The Gigabit Ethernet port with 802.3af/at support allows users to power the device using PoE switches.

The NFT Blizzard 2ac-N is specifically designed for cost-efficient, yet professional outdoor hotspot scenarios, including campsites, hospitality, education, public Wi-Fi, and many more.

The IP67-rated enclosure, integrated surge protection, and professional mounting brackets ensure continuous operation even in the harshest of weather conditions.

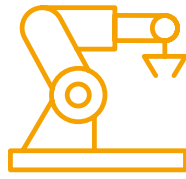


Infinity Controller

The Infinity Controller is an intuitive product and network management platform for your NFT devices. It allows easy, simple, and fast network installation, configuration, and control, all of which can be performed using a web browser.

The Controller also facilitates network maintenance and expansion by automating these processes. The management platform can function as an integrated controller or as an external one (i.e. Infinity Cloud Controller), thus serving as an optimal solution for setting up and managing networks of any size.

COPYRIGHT ©2018 LIGOWAVE



Automated Device Onboarding

Automated device onboarding (ADO) is the process of automatically setting up Infinity access points that are introduced to the network. Not only does ADO eliminate the discrepancies caused by manual setup, but it also simplifies the deployment process and saves valuable time.

Automated device onboarding requires one-time configuration of the Cloud AP, after which the settings are automatically applied to all Infinity access points that are newly-connected to the network using a physical connection.



Flexible Network Scaling

The External Infinity Controller is designed with various types of networks in mind, whether they contain just a few access points or thousands of them.

Networks can be categorized into different logical groups (up to 4 layers) based on geographical location, service type, company branch, or other criteria. Each group can have different configurations assigned to them and access points can easily migrate between networks.

Furthermore, the External NFT Controller (installed on customer premises) supports multiple organizations simultaneously (many network owners).



Pay as You Grow

A cloud-based Infinity Controller account is free and supports a network of up to 10 Infinity wireless access points, but can be expanded as the business grows. Learn more about the paid version [here](#).



IP Session Logging

Infinity access points allow users to track and log end-user credentials (source/destination IPs and ports, MAC address, etc.) on the Internet, thus allowing a safer and transparent Internet service.



Predefined Scenarios for Your Applications

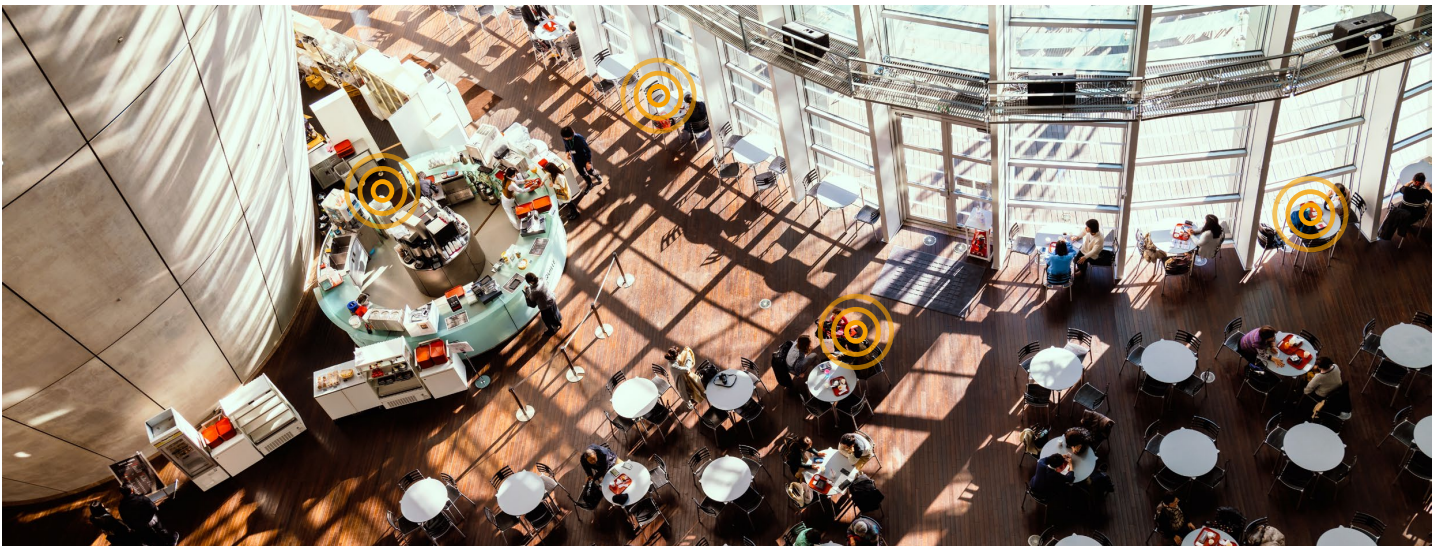
The Infinity Controller provides an array of features, collectively forming the optimal solution for multiple scenarios, e.g. a complete any-size office access point network, small café or shop hotspot, and an Easy Mesh application, which is popular among small hotels, schools, and hospitals.



Easy Mesh

Easy Mesh is LigoWave's solution to wireless network coverage expansion and device configuration automation. This feature is designed for the NFT Series (as well as DLB devices utilizing NFT firmware) and is only available on the External Infinity Controller.

The Infinity Controller allows users to set up an Easy Mesh network in a plain and simple way: just have at least one LAN-connected AP, create a new Easy Mesh network, assign devices to it, and you are good to go!



Proximity

LigoWave access points have an integrated mobile device detection feature. This means that any device within range can be logged using the MAC address and date/time without any user interaction.

The data is exported in real time and can be used to improve the services of an enterprise or managed service provider by importing them into proprietary applications for analytics and insights. An API is available upon request.

Our website provides information on LigoWave's technological partners that are using this functionality. Several of our technological partners are already using this functionality.



Technical Specifications

Wireless

WLAN Standard	IEEE 802.11a/b/g/n/ac
Radio Mode	Dual 2x2 MIMO
Radio Frequency Band	2.402–2.482GHz (Country-Dependent) 5.150–5.850GHz (Country-Dependent)
Transmit Power	2.4GHz: 29dBm @ MCS0 5GHz: 29dBm @ MCS0
Channel Size	20, 40, 80MHz
Modulation Schemes	802.11ac: OFDM (256-QAM, 64-QAM, 16-QAM, QPSK, BPSK) 802.11a/g/n: OFDM (64-QAM, 16-QAM, QPSK, BPSK) 802.11b: DSS (CCK, DQPSK, DBPSK)
Data Rates	802.11ac @ 80MHz: 866, 780, 650, 585, 520, 390, 260, 195, 130, 65Mbps 802.11n @ 40MHz: 300, 270, 240, 180, 120, 90, 60, 30Mbps 802.11a/g @ 20MHz: 54, 48, 36, 24, 18, 12, 9, 6Mbps 802.11b @ 20MHz: (11, 5.5, 2, 1Mbps)
Duplexing Scheme	Time Division Duplex
Wireless Security	WPA/WPA2 (TKIP/AES) Personal, WPA/WPA2 (TKIP/AES) Enterprise, WACL, Hotspot (UAM)

Antenna

Type	N-Type Connectors for External Antenna
Gain	Antenna-Dependent

Wired

Interface	1x 10/100/1000 Base-T, RJ-45
-----------	------------------------------

Networking

Operating Mode	Bridge, Router IPv4 and IPv6
Management IPv4	Static, Dynamic
Management IPv6	Static, Dynamic Stateless, Dynamic Stateful
Secondary IPv4	Supported
VLAN	802.1Q for Management and Data
Virtual SSID	8 per radio
Band Steering	Supported

Traffic Management

Client Isolation	Supported
Wi-Fi Multimedia (WMM)	Supported
Multicast Enhancement	Supported
Concurrent Clients	256

Services

Services	SNMP Server, NTP Client, System Alerts
Discovery Services	Bonjour, CDP/LLDP, SSDP



Power

Power Method	802.3af/at with Passive PoE (48–56V) Support
Power Supply	100–240VAC to 48VDC PoE (Included)
Power Consumption	16W

Physical Specifications (excl. Mount & Connected Antennas)

Dimensions	199mm × 228mm × 47mm
Weight	1.3kg (2.86lbs)
Mounting	Pole Mounting Bracket Included

Environmental Specifications

Outdoor Ingress Protection Rating:	IP67
Operating Temperature	–40°C (–40°F) ~ +65°C (+149°F)
Humidity	0~90% (Non-Condensing)

Management

System Monitoring via SNMP v1, Full Management via External NFT Controller

Regulatory

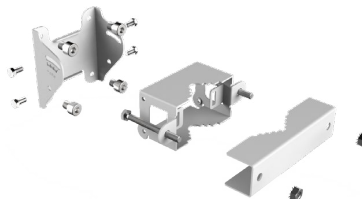
Certification	CE
---------------	----

Package Contents



1x

NFT Blizzard 2ac-N Device



1x

Device Mount



1x

48V DC Passive PoE with AC Cable



1x

Quick Instruction Guide



LigoWave

www.ligowave.com

NFT Blizzard 2ac-N

Copyright © 2018 LigoWave. All rights reserved. LigoWave, the LigoWave logo, are trademarks of LigoWave. All other company and product names may be trademarks of their respective companies. While every effort is made to ensure the information given is accurate, LigoWave does not accept liability for any errors or mistakes which may arise. Specifications and other information in this document may be subject to change without notice. To learn more about LigoWave products, visit www.ligowave.com.